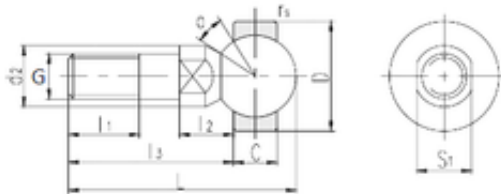




# Seohan-NTN Bearing CO.,LTD.

## LS SQD8 plain bearings



Bearing No. SQD8

S1	10 mm
d2	12 mm
l1 min.	12 mm
l2 max.	11,6 mm
l3 min.	28,6 mm
r min.	0,3 mm
C	9 mm
D	22 mm
L	41 mm
Thread (G)	M8
Angle	25 °
Weight	0,042 Kg

SQD8 Bearing 2D drawings and 3D CAD models